

# MANDATORY DISCLOSURE

(Recognized by Govt. of Odisha,  
Approved by All India Council of Technical Education, New Delhi,  
Affiliated to Biju Patnaik University of Technology, Rourkela,  
Odisha)



## ADARSHA COLLEGE OF ENGINEERING, ANGUL (346)

Phone : 9439743899, 8895364599

Mail: [adarshacollege.angul@gmail.com](mailto:adarshacollege.angul@gmail.com).

web: [www.adarshaengg.edu.in](http://www.adarshaengg.edu.in)

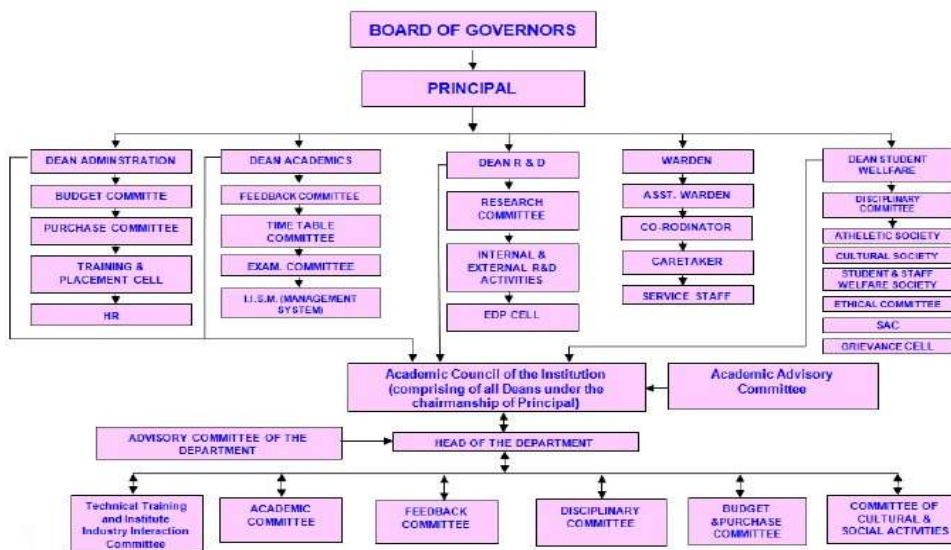
**MANDATORY DISCLOSURE**

Updated on: May, 2026

AICTE File No	F.No. Eastern/1-46269092317/2026/EOA			
Date/Period of last approval	Date of Approval: 16 <sup>th</sup> March -2026			
1	<b>Name of the institution</b>	<p><b>ADARSHA COLLEGE OF ENGINEERING, ANGUL</b></p> <p>(Affiliated to Biju Pattnaik University of Technology, Rourkela, Odisha. Recognized by Government of Odisha &amp; Approved by AICTE, New Delhi)                      Campus: At-Saradhapur, Po-Kumuurisingha, Dist-Angul, Odisha-759122                      Phone: +91 9439743899 E-mail: <a href="mailto:adarshacollege.angul@gmail.com">adarshacollege.angul@gmail.com</a>                      Website: adarshaengg.edu.in</p>		
2	<b>Name and address of the Trust</b>	<p><b>Adarsha Educational Trust</b></p> <p>Address: At/Po-Rantalei, Via-Hulurisingha, Ps-Angul Sadar, Dist-Angul, Odisha-759132</p>		
3	<b>Name and Address of the Principal/ Director</b>	<p><b>Prof. Dr. Akshaya Kumar Singh</b>  <b>Principal</b>  <a href="mailto:adarshacollege.angul@gmail.com">adarshacollege.angul@gmail.com</a>  <a href="mailto:principal@adarshaengg.edu.in">principal@adarshaengg.edu.in</a>                      ADARSHA COLLEGE OF ENGINEERING, ANGUL                      (Affiliated to Biju Pattnaik University of Technology, Rourkela, Odisha. Recognized by Government of Odisha &amp; Approved by AICTE, New Delhi)</p> <p><b>Dr. Prakash Chandra Dhal</b>  <b>Director</b>                      Adarsha College of Engineering                      Mob-8895364599</p>		
4	<b>Name of the affiliating University</b>	<b>Biju Patnaik University of Technology, Rourkela, Odisha</b>		
5	<b>Governance</b>	<b>Members of the Board and their brief background</b>		
		<b>Name</b>	<b>Designation</b>	<b>Background</b>
		Mr. Mahesh Chandra Dhal	Chairman	Educationist
		Mrs Aryasuta Dhal	Trustee	Educationist
		Mr. Ganeswar Dhal	Trustee	Advocate
		Mr.Lokanath Samanta	Trustee	Educationist
		Mr.Hara Prasada Das	Trustee	Retd Govt Servant
		<b>Members of Academic Advisory Body</b>		
		<b>Name</b>	<b>Designation</b>	
Mr M. C Dhal	Chairman, Adarsha College of Engineering, Angul			
Dr Prakash Chandra Dhal.	Director, Adarsha College of Engineering, Angul			
Dr A. K. Sarangi	Dy. Director, Adarsha College of Engineering, Angul			
Dr. A. K. Singh	Principal, Adarsha College of Engineering, Angul			
Dr Dharanidhar Nath	Director, Placement			
Dr Ranjit Kumar Amanta	Dean Academic			
Dr. A. K Sarangi	Student Welfare			
Mr.Jyoti Prakash Dash	Member			

Frequency of the Board Meeting and Academic Advisory Body: Twice in a year

Organizational chart and processes



**Nature and Extent of involvement of Faculty and students in academic affairs/ improvements**

Available in the respective Departments/Programmes on the following websites

URL: [adarshaengg.edu.in](http://adarshaengg.edu.in)

**Mechanism/ Norms and Procedure for democratic/ good Governance**

Available in the respective Departments/Programmes on the following websites URL: [adarshaengg.edu.in](http://adarshaengg.edu.in)

**Student Feedback on Institutional Governance/ Faculty performance**

Available in the respective Departments/Programmes on the following websites URL-

<https://docs.google.com/forms/d/e/1FAIpQLSdN5xxLfnC-FZYz-2zXFSSq8DoWTuzcDiTUCkZUyZsiPbYoZQ/viewform>

**Grievance Redressal mechanism for Faculty, staff and students**

<https://adarshaengg.edu.in/mandatory-disclosure/>

**Establishment of Anti Ragging Committee-**<https://adarshaengg.edu.in/mandatory-disclosure/>

**Establishment of Online Grievance Redressal Mechanism** <https://adarshaengg.edu.in/mandatory-disclosure/>

**Establishment of Internal Complaint Committee (ICC)**

Available in the respective Departments/Programmes on the following websites URL:

<https://adarshaengg.edu.in/mandatory-disclosure/>

**Establishment of Committee for SC/ ST** URL: <https://adarshaengg.edu.in/mandatory-disclosure/>

**Internal Quality Assurance Cell**

Available in the respective Departments/Programmes on the following websites URL:

<https://adarshaengg.edu.in/mandatory-disclosure/>

		Name of Programmes approved by AICTE					
		Programme/Course	Approved Intake (2026-27)	Approved Intake (2025-26)			
6 Programmes		<b>UG –Engineering</b>					
		B.Tech.- Civil Engineering	60	60			
		B.Tech.-Computer Sc. & Engg	30	30			
		B.Tech.-Electrical Electronics Engg	30	30			
		B.Tech.-Electrical Engineering	60	60			
		B.Tech.-Mechanical Engineering	120	120			
		B.Tech.-.Metallurgical Engg	30	30			
		B.Tech.-Mining Engineering	120	120			
		<b>PG –Engineering</b>					
		M.Tech.- Environmental Sc. & Engg	24	24			
		M.Tech.- Computer Sc. & Engg	12	12			
		M.Tech.- Power System Engineering	12	12			
		M.Tech.- Production Engineering	12	12			
		NBA Accreditation Status					
		1.	Programme / Course Accredited	Applied for Computer Sc. & Engineering Branch			
NAAC Accreditation Status							
1.	Not Accredited	Eligible - Application under process					
For each Programme the following details are to be given:							
Programme / Course	No. of Seats	Duration	Cut off rank (last -3Y)			Fee 2025-26	Campus placement (last-3Y with max / min salary in Lakhs)
			2025-26	2024-25	2023-24		
<b>UG –Engineering</b>							
B.Tech.- Civil Engineering	60	4 years	2022-			Rs.66,000	04 /4, 2
B.Tech.-Computer Sc. & Engg	30	4 years				Rs.66,000	4.5/3, 6
B.Tech.-Electrical Electronics Engg	30	4 years				Rs.66,000	4.8/3, 6
B.Tech.-Electrical Engineering	60	4 years				Rs.66,000	4.8/3, 6
B.Tech.-Mechanical Engineering	120	4 years				Rs.66,000	6.0/3.6
B.Tech.-.Metallurgical Engg	30	4 years				Rs.66,000	NA
B.Tech.-Mining Engineering	120	4 years				Rs.66,000	6.6/4.2
<b>PG –Engineering</b>							
M.Tech.- Environmental Sc. & Engg	24	2 years				Rs.55,000	6.6/4.2
M.Tech.- Computer Sc. & Engg	12	2 years				Rs.55,000	6.6/4.2
M.Tech.- Power System Engineering	12	2 years				Rs.55,000	6.6/4.2
M.Tech.- Production Engineering	12	2 years				Rs.55,000	6.6/4.2

7	Faculty	<table border="1"> <thead> <tr> <th>Programme/Course</th> <th>Web link</th> </tr> </thead> <tbody> <tr> <td colspan="2"><b>UG/PG –Engineering</b></td> </tr> <tr> <td>Civil Engineering</td> <td><a href="https://adarshaengg.edu.in/course-offered/">https://adarshaengg.edu.in/course-offered/</a></td> </tr> <tr> <td>Computer Sc. &amp; Engg</td> <td><a href="https://adarshaengg.edu.in/course-offered/">https://adarshaengg.edu.in/course-offered/</a></td> </tr> <tr> <td>Electrical Electronics Engg</td> <td><a href="https://adarshaengg.edu.in/course-offered/">https://adarshaengg.edu.in/course-offered/</a></td> </tr> <tr> <td>Electrical Engineering</td> <td><a href="https://adarshaengg.edu.in/course-offered/">https://adarshaengg.edu.in/course-offered/</a></td> </tr> <tr> <td>Mechanical Engineering</td> <td><a href="https://adarshaengg.edu.in/course-offered/">https://adarshaengg.edu.in/course-offered/</a></td> </tr> <tr> <td>Metallurgical Engg</td> <td><a href="https://adarshaengg.edu.in/course-offered/">https://adarshaengg.edu.in/course-offered/</a></td> </tr> <tr> <td>Mining Engineering</td> <td><a href="https://adarshaengg.edu.in/course-offered/">https://adarshaengg.edu.in/course-offered/</a></td> </tr> <tr> <td>Environmental Sc. &amp; Engg</td> <td><a href="https://adarshaengg.edu.in/course-offered/">https://adarshaengg.edu.in/course-offered/</a></td> </tr> <tr> <td>Computer Sc. &amp; Engg</td> <td><a href="https://adarshaengg.edu.in/course-offered/">https://adarshaengg.edu.in/course-offered/</a></td> </tr> <tr> <td>Production Engineering</td> <td><a href="https://adarshaengg.edu.in/course-offered/">https://adarshaengg.edu.in/course-offered/</a></td> </tr> <tr> <td>Power System Engineering</td> <td><a href="https://adarshaengg.edu.in/course-offered/">https://adarshaengg.edu.in/course-offered/</a></td> </tr> </tbody> </table>		Programme/Course	Web link	<b>UG/PG –Engineering</b>		Civil Engineering	<a href="https://adarshaengg.edu.in/course-offered/">https://adarshaengg.edu.in/course-offered/</a>	Computer Sc. & Engg	<a href="https://adarshaengg.edu.in/course-offered/">https://adarshaengg.edu.in/course-offered/</a>	Electrical Electronics Engg	<a href="https://adarshaengg.edu.in/course-offered/">https://adarshaengg.edu.in/course-offered/</a>	Electrical Engineering	<a href="https://adarshaengg.edu.in/course-offered/">https://adarshaengg.edu.in/course-offered/</a>	Mechanical Engineering	<a href="https://adarshaengg.edu.in/course-offered/">https://adarshaengg.edu.in/course-offered/</a>	Metallurgical Engg	<a href="https://adarshaengg.edu.in/course-offered/">https://adarshaengg.edu.in/course-offered/</a>	Mining Engineering	<a href="https://adarshaengg.edu.in/course-offered/">https://adarshaengg.edu.in/course-offered/</a>	Environmental Sc. & Engg	<a href="https://adarshaengg.edu.in/course-offered/">https://adarshaengg.edu.in/course-offered/</a>	Computer Sc. & Engg	<a href="https://adarshaengg.edu.in/course-offered/">https://adarshaengg.edu.in/course-offered/</a>	Production Engineering	<a href="https://adarshaengg.edu.in/course-offered/">https://adarshaengg.edu.in/course-offered/</a>	Power System Engineering	<a href="https://adarshaengg.edu.in/course-offered/">https://adarshaengg.edu.in/course-offered/</a>
		Programme/Course	Web link																										
		<b>UG/PG –Engineering</b>																											
		Civil Engineering	<a href="https://adarshaengg.edu.in/course-offered/">https://adarshaengg.edu.in/course-offered/</a>																										
		Computer Sc. & Engg	<a href="https://adarshaengg.edu.in/course-offered/">https://adarshaengg.edu.in/course-offered/</a>																										
		Electrical Electronics Engg	<a href="https://adarshaengg.edu.in/course-offered/">https://adarshaengg.edu.in/course-offered/</a>																										
		Electrical Engineering	<a href="https://adarshaengg.edu.in/course-offered/">https://adarshaengg.edu.in/course-offered/</a>																										
		Mechanical Engineering	<a href="https://adarshaengg.edu.in/course-offered/">https://adarshaengg.edu.in/course-offered/</a>																										
		Metallurgical Engg	<a href="https://adarshaengg.edu.in/course-offered/">https://adarshaengg.edu.in/course-offered/</a>																										
		Mining Engineering	<a href="https://adarshaengg.edu.in/course-offered/">https://adarshaengg.edu.in/course-offered/</a>																										
		Environmental Sc. & Engg	<a href="https://adarshaengg.edu.in/course-offered/">https://adarshaengg.edu.in/course-offered/</a>																										
		Computer Sc. & Engg	<a href="https://adarshaengg.edu.in/course-offered/">https://adarshaengg.edu.in/course-offered/</a>																										
		Production Engineering	<a href="https://adarshaengg.edu.in/course-offered/">https://adarshaengg.edu.in/course-offered/</a>																										
Power System Engineering	<a href="https://adarshaengg.edu.in/course-offered/">https://adarshaengg.edu.in/course-offered/</a>																												
Profile of the Principal /Director	<p><b>Prof. Dr. Akshaya Kumar Singh</b>  <b>Principal</b>  <b>Phd, M. Tech</b>  <a href="mailto:adarshacollege.angul@gmail.com">adarshacollege.angul@gmail.com</a>  <a href="mailto:principal@adarshaengg.edu.in">principal@adarshaengg.edu.in</a>  ADARSHA COLLEGE OF ENGINEERING, ANGUL  (Affiliated to Biju Pattnaik University of Technology, Rourkela, Odisha. Recognized by Government of Odisha &amp; Approved by AICTE, New Delhi)</p>																												
8	Profile of the Faculty	<table border="1"> <thead> <tr> <th>Programme/Course</th> <th>Web link</th> </tr> </thead> <tbody> <tr> <td colspan="2"><b>UG/PG –Engineering</b></td> </tr> <tr> <td>Civil Engineering</td> <td><a href="https://adarshaengg.edu.in/faculty/">https://adarshaengg.edu.in/faculty/</a></td> </tr> <tr> <td>Computer Sc. &amp; Engg</td> <td><a href="https://adarshaengg.edu.in/faculty/">https://adarshaengg.edu.in/faculty/</a></td> </tr> <tr> <td>Electrical Electronics Engg</td> <td><a href="https://adarshaengg.edu.in/faculty/">https://adarshaengg.edu.in/faculty/</a></td> </tr> <tr> <td>Electrical Engineering</td> <td><a href="https://adarshaengg.edu.in/faculty/">https://adarshaengg.edu.in/faculty/</a></td> </tr> <tr> <td>Mechanical Engineering</td> <td><a href="https://adarshaengg.edu.in/faculty/">https://adarshaengg.edu.in/faculty/</a></td> </tr> <tr> <td>Metallurgical Engg</td> <td><a href="https://adarshaengg.edu.in/faculty/">https://adarshaengg.edu.in/faculty/</a></td> </tr> <tr> <td>Mining Engineering</td> <td><a href="https://adarshaengg.edu.in/faculty/">https://adarshaengg.edu.in/faculty/</a></td> </tr> <tr> <td>Environmental Sc. &amp; Engg</td> <td><a href="https://adarshaengg.edu.in/faculty/">https://adarshaengg.edu.in/faculty/</a></td> </tr> <tr> <td>Computer Sc. &amp; Engg</td> <td><a href="https://adarshaengg.edu.in/faculty/">https://adarshaengg.edu.in/faculty/</a></td> </tr> <tr> <td>Production Engineering</td> <td><a href="https://adarshaengg.edu.in/faculty/">https://adarshaengg.edu.in/faculty/</a></td> </tr> <tr> <td>Power System Engineering</td> <td><a href="https://adarshaengg.edu.in/faculty/">https://adarshaengg.edu.in/faculty/</a></td> </tr> </tbody> </table>		Programme/Course	Web link	<b>UG/PG –Engineering</b>		Civil Engineering	<a href="https://adarshaengg.edu.in/faculty/">https://adarshaengg.edu.in/faculty/</a>	Computer Sc. & Engg	<a href="https://adarshaengg.edu.in/faculty/">https://adarshaengg.edu.in/faculty/</a>	Electrical Electronics Engg	<a href="https://adarshaengg.edu.in/faculty/">https://adarshaengg.edu.in/faculty/</a>	Electrical Engineering	<a href="https://adarshaengg.edu.in/faculty/">https://adarshaengg.edu.in/faculty/</a>	Mechanical Engineering	<a href="https://adarshaengg.edu.in/faculty/">https://adarshaengg.edu.in/faculty/</a>	Metallurgical Engg	<a href="https://adarshaengg.edu.in/faculty/">https://adarshaengg.edu.in/faculty/</a>	Mining Engineering	<a href="https://adarshaengg.edu.in/faculty/">https://adarshaengg.edu.in/faculty/</a>	Environmental Sc. & Engg	<a href="https://adarshaengg.edu.in/faculty/">https://adarshaengg.edu.in/faculty/</a>	Computer Sc. & Engg	<a href="https://adarshaengg.edu.in/faculty/">https://adarshaengg.edu.in/faculty/</a>	Production Engineering	<a href="https://adarshaengg.edu.in/faculty/">https://adarshaengg.edu.in/faculty/</a>	Power System Engineering	<a href="https://adarshaengg.edu.in/faculty/">https://adarshaengg.edu.in/faculty/</a>
		Programme/Course	Web link																										
		<b>UG/PG –Engineering</b>																											
		Civil Engineering	<a href="https://adarshaengg.edu.in/faculty/">https://adarshaengg.edu.in/faculty/</a>																										
		Computer Sc. & Engg	<a href="https://adarshaengg.edu.in/faculty/">https://adarshaengg.edu.in/faculty/</a>																										
		Electrical Electronics Engg	<a href="https://adarshaengg.edu.in/faculty/">https://adarshaengg.edu.in/faculty/</a>																										
		Electrical Engineering	<a href="https://adarshaengg.edu.in/faculty/">https://adarshaengg.edu.in/faculty/</a>																										
		Mechanical Engineering	<a href="https://adarshaengg.edu.in/faculty/">https://adarshaengg.edu.in/faculty/</a>																										
		Metallurgical Engg	<a href="https://adarshaengg.edu.in/faculty/">https://adarshaengg.edu.in/faculty/</a>																										
		Mining Engineering	<a href="https://adarshaengg.edu.in/faculty/">https://adarshaengg.edu.in/faculty/</a>																										
		Environmental Sc. & Engg	<a href="https://adarshaengg.edu.in/faculty/">https://adarshaengg.edu.in/faculty/</a>																										
		Computer Sc. & Engg	<a href="https://adarshaengg.edu.in/faculty/">https://adarshaengg.edu.in/faculty/</a>																										
		Production Engineering	<a href="https://adarshaengg.edu.in/faculty/">https://adarshaengg.edu.in/faculty/</a>																										
Power System Engineering	<a href="https://adarshaengg.edu.in/faculty/">https://adarshaengg.edu.in/faculty/</a>																												
9	Fee Details	<table border="1"> <thead> <tr> <th>Programme</th> <th>Fee fixed by TAFRC for the block period (2022-2025)</th> </tr> </thead> <tbody> <tr> <td>UG–Engineering</td> <td>Rs. 66,000 per annum</td> </tr> <tr> <td>PG –Engineering</td> <td>Rs. 55,000 per annum</td> </tr> </tbody> </table>		Programme	Fee fixed by TAFRC for the block period (2022-2025)	UG–Engineering	Rs. 66,000 per annum	PG –Engineering	Rs. 55,000 per annum																				
		Programme	Fee fixed by TAFRC for the block period (2022-2025)																										
		UG–Engineering	Rs. 66,000 per annum																										
PG –Engineering	Rs. 55,000 per annum																												

10	Admission	<table border="1"> <thead> <tr> <th>Programme/Course</th> <th>Approved Intake 2025-26</th> <th>Student admitted 2025-26</th> </tr> </thead> <tbody> <tr> <td colspan="3"><b>UG –Engineering</b></td> </tr> <tr> <td>B.Tech.- Civil Engineering</td> <td>60</td> <td>15</td> </tr> <tr> <td>B.Tech.-Computer Sc. &amp; Engg</td> <td>30</td> <td>24</td> </tr> <tr> <td>B.Tech.-Electrical Electronics Engg</td> <td>60</td> <td>05</td> </tr> <tr> <td>B.Tech.-Electrical Engineering</td> <td>60</td> <td>23</td> </tr> <tr> <td>B.Tech.-Mechanical Engineering</td> <td>120</td> <td>37</td> </tr> <tr> <td>B.Tech.- Metallurgical Engg</td> <td>30</td> <td>02</td> </tr> <tr> <td>B.Tech.-Mining Engineering</td> <td>120</td> <td>41</td> </tr> <tr> <td colspan="3"><b>PG –Engineering</b></td> </tr> <tr> <td>M.Tech.- Environmental Sc. &amp; Engg</td> <td>24</td> <td>17</td> </tr> <tr> <td>M.Tech.- Computer Sc. &amp; Engg</td> <td>12</td> <td>01</td> </tr> <tr> <td>M.Tech.- Power System Engineering</td> <td>12</td> <td>03</td> </tr> <tr> <td>M.Tech.- Production Engineering</td> <td>12</td> <td>05</td> </tr> </tbody> </table>	Programme/Course	Approved Intake 2025-26	Student admitted 2025-26	<b>UG –Engineering</b>			B.Tech.- Civil Engineering	60	15	B.Tech.-Computer Sc. & Engg	30	24	B.Tech.-Electrical Electronics Engg	60	05	B.Tech.-Electrical Engineering	60	23	B.Tech.-Mechanical Engineering	120	37	B.Tech.- Metallurgical Engg	30	02	B.Tech.-Mining Engineering	120	41	<b>PG –Engineering</b>			M.Tech.- Environmental Sc. & Engg	24	17	M.Tech.- Computer Sc. & Engg	12	01	M.Tech.- Power System Engineering	12	03	M.Tech.- Production Engineering	12	05
		Programme/Course	Approved Intake 2025-26	Student admitted 2025-26																																								
		<b>UG –Engineering</b>																																										
		B.Tech.- Civil Engineering	60	15																																								
		B.Tech.-Computer Sc. & Engg	30	24																																								
		B.Tech.-Electrical Electronics Engg	60	05																																								
		B.Tech.-Electrical Engineering	60	23																																								
		B.Tech.-Mechanical Engineering	120	37																																								
		B.Tech.- Metallurgical Engg	30	02																																								
		B.Tech.-Mining Engineering	120	41																																								
		<b>PG –Engineering</b>																																										
		M.Tech.- Environmental Sc. & Engg	24	17																																								
		M.Tech.- Computer Sc. & Engg	12	01																																								
		M.Tech.- Power System Engineering	12	03																																								
M.Tech.- Production Engineering	12	05																																										
11	Admission Procedure	<table border="1"> <thead> <tr> <th rowspan="2">Programme</th> <th colspan="2">Seat Matrix (% on approved intake)</th> <th>Test Agency</th> </tr> <tr> <th>State OJEE</th> <th>Mgmt.</th> <th>OJEE-Convener</th> </tr> </thead> <tbody> <tr> <td>UG-Engineering</td> <td>100%</td> <td>-</td> <td>OJEE</td> </tr> <tr> <td>PG -Engineering</td> <td>100%</td> <td>-</td> <td>OJEE</td> </tr> </tbody> </table>	Programme	Seat Matrix (% on approved intake)		Test Agency	State OJEE	Mgmt.	OJEE-Convener	UG-Engineering	100%	-	OJEE	PG -Engineering	100%	-	OJEE																											
		Programme		Seat Matrix (% on approved intake)		Test Agency																																						
			State OJEE	Mgmt.	OJEE-Convener																																							
		UG-Engineering	100%	-	OJEE																																							
		PG -Engineering	100%	-	OJEE																																							
<p>Calendar for admission against Convener seats and allotment as per the respective Convener(s) of the programme, Govt. of Odisha</p> <p>Calendar for admission against Management/vacant seats as provided by OJEE, Govt. of Odisha</p>																																												
12		Criteria and Weightage for Admission	OJEE, Govt. of Odisha																																									
13		List of Applicants	As per the admission guidelines and admission schedule provided by OJEE, Govt. of Odisha																																									
14		Results of Admission Under Management seats/Vacant seats	As per the admission guidelines and admission schedule provided by OJEE, Govt. of Odisha																																									

Computing Facilities				
Programme	Internet Bandwidth	Number and configuration of System	Number of system connected by LAN/WAN	Major software packages
UG/PG-Engineering	100 Mbps AIRTEL Lease Line	310	310	Auto-CAD-2010 Auto-CAD LDDT Rel 2i Auto-CAD Map-2008 STADD - Pro 2001 3-D Studio Viz Rel 3i NASTRAN MATLab I CAP/4 Windows 8.71 (P SPICE) Active HDL 4.1Mat Lab 5.1 Mat Lab 7.12 Xilinx HDL Cadence, Mentor Graphics MATLAB CONTROL SYSTEM TOOL BOX DIGITAL SIGNAL TOOL BOX Ansys 15 Solid Works PTC Creo 2.0 Iron CAD 2012 CATIA V 5 R11 Auto CAD 2000 Gibbs CAM CNC offline milling CNC Turning CNC Train Mill & Turn Work space Simulation Iron CAD 3.2 Ansys 5.7

	<p><b>List of facilities available</b> Games and Sports Facilities: <b>Available</b> Extra-Curricular Activities: <b>Available</b> Soft Skill Development Facilities: <b>Available</b></p> <p><b>Teaching Learning Process</b> Curricula and syllabus for each of the Programmes as approved by the University Academic Calendar of the University: Available on the below website URL: <a href="http://www.bput.ac.in">http://www.bput.ac.in</a> Academic Time Table with the name of the Faculty members handling the Course Teaching Load of each Faculty: Available in the respective Departments/Programmes Internal Continuous Evaluation System and place Student's assessment of Faculty, System in place: Available in the respective Departments/Programmes on the following websites URL: <a href="http://adarshaengg.edu.in">adarshaengg.edu.in</a></p>
	<p>For each Post Graduate Courses give the following: Title of the Course Curricula and Syllabus Available on the below website URL: <a href="http://www.bput.ac.in">http://www.bput.ac.in</a> Laboratory facilities exclusive to the Post Graduate Course Available in the respective Departments/Programmes on the following websites</p>

		<ul style="list-style-type: none"> <li>• Wi-Fi enabled campus encourages additional learning by way of access to website containing e-learning resources.</li> <li>• Monitoring center for research for undergoing M.Tech. scholar's dissertation work</li> <li>• Transparency ensured in evaluating students' academic performance</li> <li>• 24x7 students' feedback about teachers' performance and follow-on action.</li> <li>• Introduced appraisal of teachers' performance by the students twice in an academic year</li> </ul> <p><b>Enrichment of Skill Sets of Student</b></p> <ul style="list-style-type: none"> <li>• Promoting the students for their involvement in co-curricular activities within and outside the campus by assigning additional credit under an able guidance of faculty</li> <li>• Industrial training and internship since second year of UG program</li> <li>• Conducting guest lectures, workshops and seminars to encourage higher education</li> <li>• Proctor system - each faculty member work as a proctor for a group of twenty students (five each from First year to final year B.Tech. program) for counseling and better performance of students.</li> <li>• Advanced learners are encouraged to come out with innovative ideas / take up short term projects and they are involved in mentoring activities.</li> <li>• Incubation center with the motive of encouraging the establishment of start-up companies in the immediate future</li> <li>• Career guidance cells, soft-skill development activities, grievance redressal cell helping students to excel in academics.</li> </ul> <p><b>Interaction with Outside World</b></p> <ul style="list-style-type: none"> <li>• Establishment of tie-ups with renowned industries and institutes</li> <li>• Motivation and support for students for appearing competitive exams and summer internship in industries, research Institute in India and abroad.</li> <li>• Creation of Centers of Excellence to promote research in diversified fields to emerge in National and International level.</li> <li>• Formation of Industry-Institute Partnership Cell to promote professional education and research.</li> <li>• Academic flexibility and participation of industries in teaching.</li> </ul> <p><b>Faculty Development and Welfare</b></p> <ul style="list-style-type: none"> <li>• ERP implementation for management of Leave, Time table, Salary, Library, Exam and results, Fees Collection, Teaching learning processes, Admissions, etc.</li> <li>• Appropriate functioning of grievance Redressal mechanism</li> <li>• Implementation of CAS to promote faculty to higher post</li> <li>• Enhance teacher quality, all the faculty members to pursue Ph.D.</li> <li>• Encourage faculty members apply for research and development projects funded by DST, UGC, CSIR, AICTE, DRDO, etc.</li> <li>• FDP courses for the benefit of faculty members.</li> <li>• Faculty members organizing / attending short term courses in emerging areas.</li> <li>• Encourage all faculties in research, consultancy and extension in new and emerging areas thereby revenue generation.</li> </ul>
		<p>Contact Details  Adarsha College of Engineering, Angul  At-Saradhapur, Po-Kumurisingha, Dist-Angul, Odisha-759122  E-mail ID- <a href="mailto:adarshacollege.angul@gmail.com">adarshacollege.angul@gmail.com</a>, <a href="mailto:principal@adarshaengg.edu.in">principal@adarshaengg.edu.in</a>  Web site-<a href="http://adarshaengg.edu.in">adarshaengg.edu.in</a>  Contact No-9439743899, 8895364599, 8480301386</p>